

Future Tech Group

Our journey began in 1990 as manufacturers of Electronic and Scientific Instruments under the brand name Future Tech, which is today recognized as a leading name in Educational Institutions throughout the states of Telangana, Andhra Pradesh, Tamil Nadu, Madhya Pradesh, Karnataka, Maharashtra, Rajasthan, Uttar Pradesh, West Bengal, Punjab and Haryana.

Future Tech Life Care is the name of our Healthcare initiative which is engaged in Holistic Ayurveda and Pharma Products. During the difficult times of Covid 19, Future Tech Life Care has equipped frontline workers with safety accessories and immunity boosters.

Future Tech's Software Division has developed unique software products for ERP, HRMS, CRM, Accounting and Web-related Ecommerce. Future Tech has its presence in Hardware Park, Srisailem Highway near Rajiv Gandhi International Airport.

Future Tech's first Real Estate Venture was under HMDA limits, at Thumkunta, on the Shamirpet Highway. The Company is now confidently moving into its second venture, which given its noteworthy approach of clean, transparent business dealings, give customers immediate confidence and great appreciation in the coming future.

This venture, King's Park will raise the bar for all developments in the region.



TLP. No. 61/2020/H



www.lotusinfraprojects.in



LOTUS

INFRA PROJECTS



Discover The Treasure Within



MD's MESSAGE

Srinivasa Rao Gogineni
Founder & Managing Director
Future Tech Group,
Real Estate, Healthcare, Software, Scientific & Electronic Instruments.

King's Park is a Future Tech Nirmaan project that will set the benchmark for real estate ventures in Balanagar/ Shadnagar and the surrounding areas.

King's Park brings you several well thought out ideas aimed at enhancing the value of your investment and also your quality of life should you decide to build your home and live here.

This makes it a project worth owning a part of, for the investor and a cost-effective purchase for the potential home-owner. In fact, at King's Park, you can actually own an independent villa with kitchen garden and ample greenery for the cost of an apartment.

Because of land rates in Telangana being amongst the lowest in the country, King's Park gives buyers a low entry price and substantially higher selling price.

I am sure that everyone who participates in this project will enjoy generous returns on a modest outlay. I invite you carefully consider this offer, and visit our site.



King's Park

A veritable treasure trove.

Just waiting to be discovered, hidden 100 meters off the Service Road on Bangalore Highway, is a better, safer and more lucrative land investment than you could ever imagine.

A property like King's Park would be hard to find for a number of reasons... firstly, the location. Secondly, the promoters - Future Tech Nirmaan. And thirdly, the project itself!

Each of which hold out a promise to deliver to you a wonderful investment opportunity that would make a fortune for you if you hold on to the land.

Or present to you a plan for a lovely home in a well-conceived community with excellent amenities, should you choose to buy, build and move in, sometime in the near future.

Why King's Park is just right for you.

Kings Park is a 6 acre development at Balanagar, near Shadnagar on the outskirts of Hyderabad on the highway to Bangalore. King's Park is just half an hour after the RGI Airport.

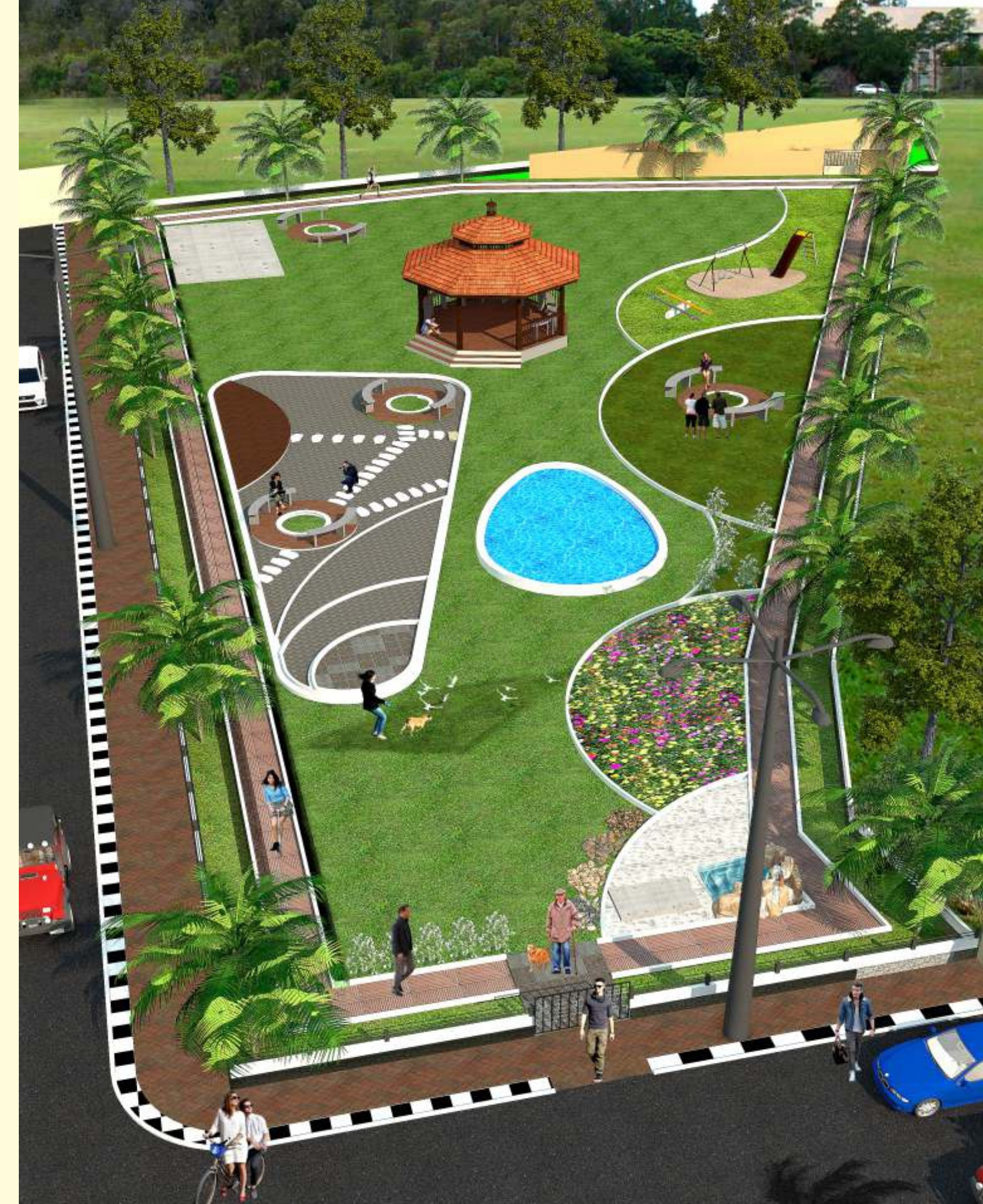
Balanagar/Shadnagar today has the fastest appreciating land rates and also appears to be the fastest developing location on this highway!

King's Park has plot sizes of 147, 150, 183 sq. yds. and larger arranged alongside 40 ft. and 33 ft. inner roads leading in from the impressive entrance gate. The plots are in a 'ready to build, ready to live' state, with some well-planned and aesthetic landscaping and avenue tree plantation.

5 assorted trees are provided in each plot so that buyers get the benefit of readymade greenery. Water connections have been provided for each plot, as also a modern, efficient underground drainage system.

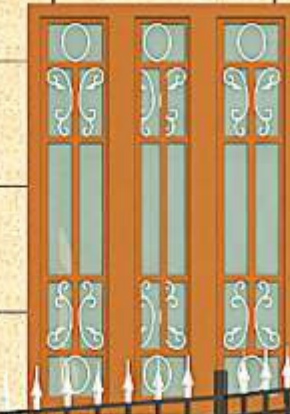
King's Park provides a beautifully designed with a Gazebo and seating, ideal to organize parties and get-togethers for residents.

At the far side of the development, is a mini hillock which adds to the natural beauty of the park and the whole development.





King's  Park



Amenities



Clear Title



Gated Community with Grand Entrance



40 & 33 Feet Metal Roads



Avenue Tree Plantations



Modern Efficient Drainage System



Walking & Jogging Path



Street Lights Lining the Roads



24 hrs. Security with CCTV



Electrical Transformer



Recharge of Ground Water & Rain Harvesting



Heavy Duty Road Laying for Extra Durability and Long Life



Rooms for Watchman, and Security provided with common toilets

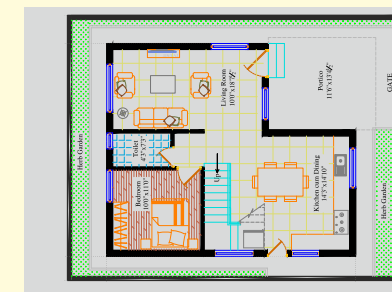
Everything that signifies a good investment



Community Park with Seating



And a Gazebo



Ready Plans for Housebuilding



100% Vastu



Water Connection from Common Sump

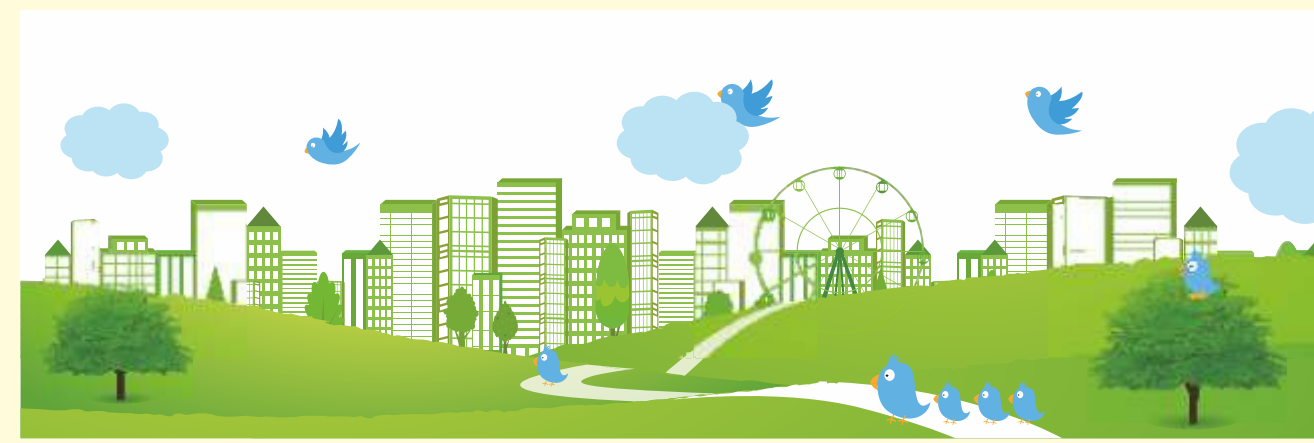


5 Assorted Trees in Every Kitchen Garden



Immediate Registration

3 Years Free Maintenance Commitment from Company



Pollution Free Environment

Location Benefits

Kings Park is located near Balanagar / Shadnagar area which has shown the greatest appreciation in value in recent times. In several cases this appreciation has outstripped locations much closer to the city.

King's Park is located 2 km from Balanagar, 12 km from Shadnagar and 100 meters from NH-44 Hyderabad - Bangalore highway. Being a well-planned and beautifully executed gated venture with all modern amenities, the project will attract much interest from these towns also.

King's Park is only 12 km from Industrial Green Park, Raipally where major units like Aurobindo Pharma, Hetero Bio Pharma, Ashok Leyland and L&T Constructions, besides scores of industrial units located within the Park. King's Park is just across the road from Hindustan Foods which contract manufactures FMCG products for several MNCs in India.

It will be of great interest to the several hundred employees from the nearby industrial estates who want to have their residence close to their workplace.



Distances

King's Park to Balanagar	- 2 km	King's Park to Kothur	- 29 km
King's Park to Raikal Toll Plaza	- 8 km	King's Park to Shamshabad	- 44 km
King's Park to Shadnagar	- 12 km	King's Park to Gachibowli	- 66 km

Route map



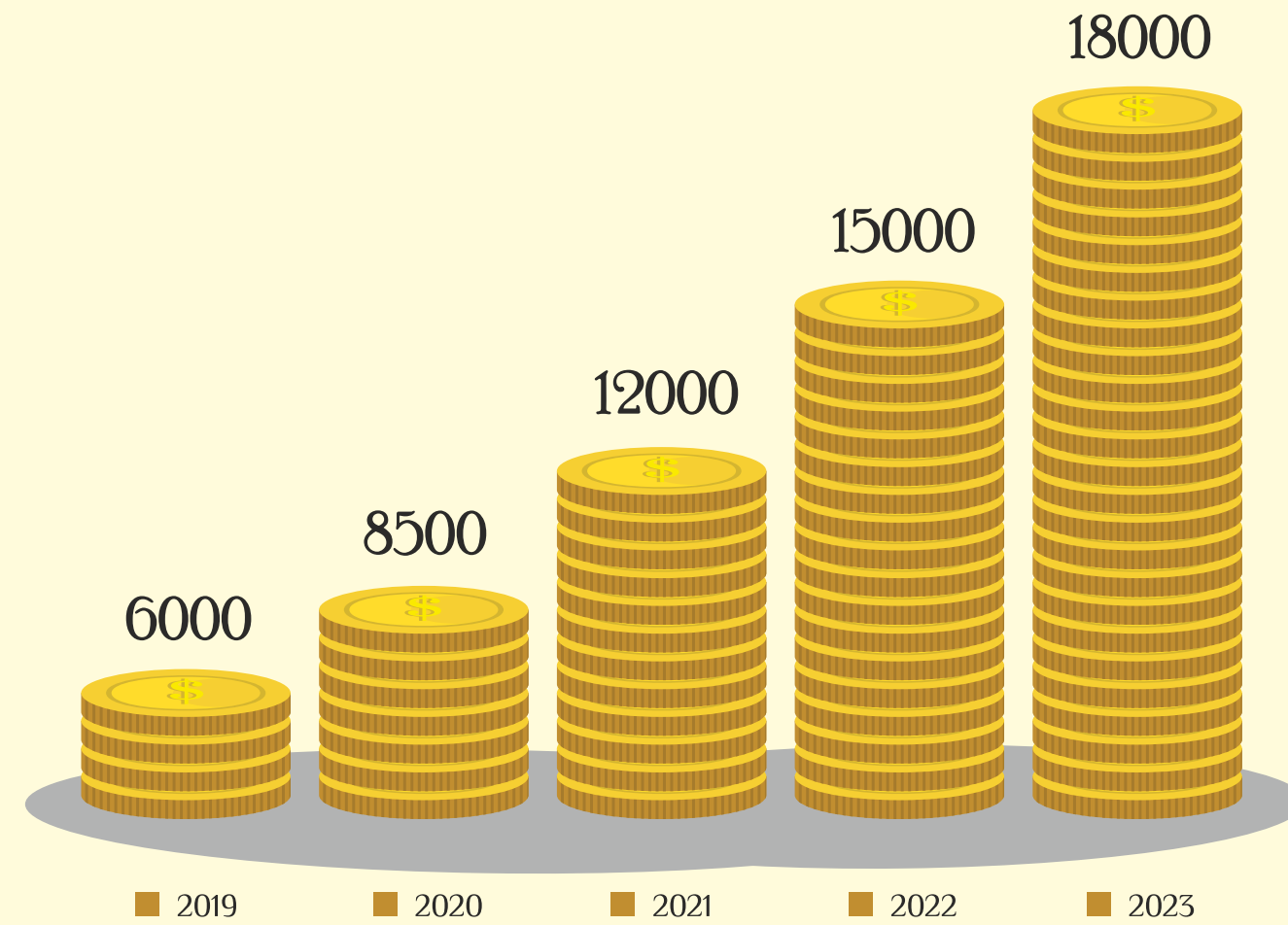


Prospects of appreciation

Real Estate values in and around Hyderabad have shown steady growth and appreciation, over the past couple of decades. Proximity to industrial parks and areas, highways, railheads, airports, bus stations and other towns and cities, all have a role to play in the ideal price for a given location.

King's Park already has the benefit of all of the above. And the Balanagar / Shadnagar area where the project is located has grown quietly over the years and is ready to take-off. Expect rich returns. The price being quoted is lower than what several areas in the interiors are quoting.

King's Park is only 100 meters away from the highway. An investment now will give you a fortune in return when you make up your mind to sell!



Plotting Plan



E. P. No: 12087/455/e-panchayat
 Ref. No: 455 of Peddaipally G.P,
 T.L.P No: 61/2020/H

